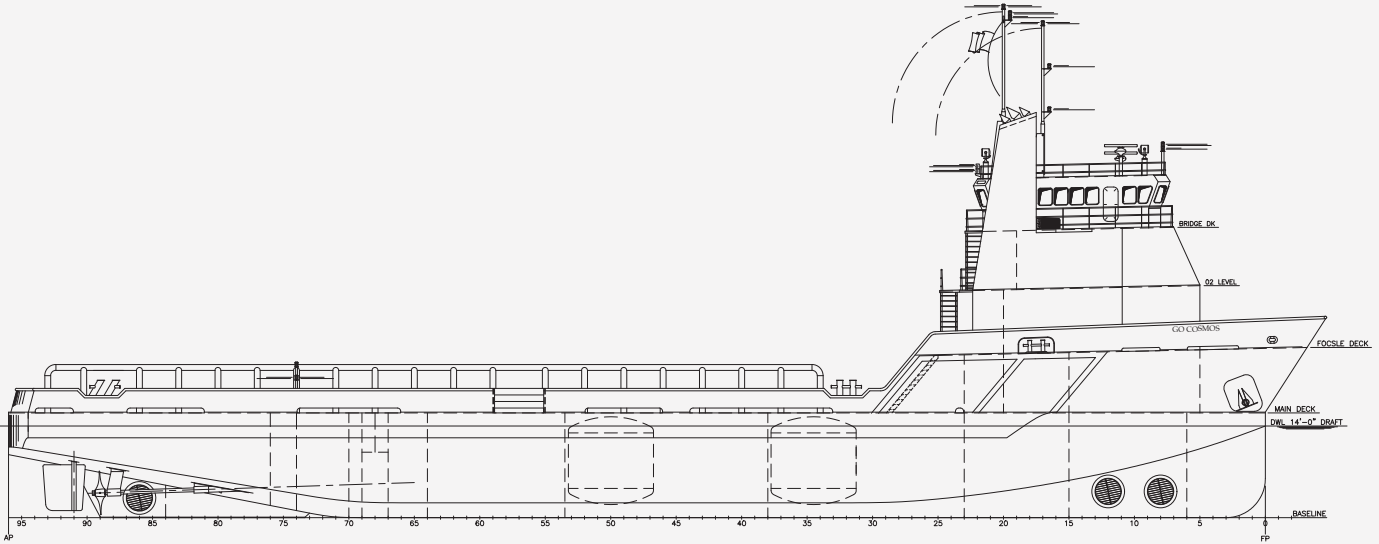




GUICE OFFSHORE

220 CLASS DP2 MULTI-PURPOSE VESSEL M/V GO COSMOS



OUTBOARD PROFILE

HULL SPECIFICATIONS

Length:	220'	67m
Beam:	48'	14.6m
Depth:	16'	4.9m
Draft Max:	15'	4.6m
Clear Deck:	146' x 40'	44.5m x 12.2m

CAPACITIES

Deck Cargo:	800 LT	812 Mt
Deck Strength:	540 lbs/ft ²	2.59 Mt
Potable Water:	7,600 usg	28.77 m ³
Fuel:	112,200 usg	424.72 m ³
Ballast Water:	89,000 usg	336.9 m ³
Liquid Mud:	4,280 bbls	680.46 m ³
Dry Bulk:	5,400 ft ³	152.91

PROPULSION

Main Engines:	2 x Caterpillar 3512B
Total HP:	3,150 BHP
Generators:	2 x Cat C-32
Total Gen Rating:	910 kW
Bow Thruster:	2 x 450 BHP
Stern Thruster:	1 x 450 BHP
Rudders:	Spade

ACCOMMODATIONS

Cabins / Berths:	9 / 30
Heads:	6
Lounge Areas:	Lounge area on main deck level
Walk in Cooler:	Yes
Walk in Freezer:	Yes

ELECTRONICS

Radars:	2 x Furuno
Auto Pilot:	Kongsberg
GPS (Navigation):	Yes x 2 Kongsberg
Echo Sounder:	Yes
VHF Radios:	Yes x 3
Dynamic Positioning:	Kongsberg - DP2
DP Reference System:	2 x GPS, Spt Tracker, Radius
Electronic Plotter:	Yes
Sat Communication:	Starlink
SSB:	Yes

SPECIAL EQUIPMENT

Removable Stern Bulwark:	Yes
Transom Opening:	Yes
Capable of Zero Discharge:	Yes
A-Frame:	25T

DOCUMENTATION

US Flag:	US, Sub L and I, ON 1239981
Class:	†A1, †AMS, †DPS 2, Circle E, Offshore Support Vessel, United States Domestic Service
Builder:	Master Boat Builder
Delivery Date:	2012

PERFORMANCE

Cruise:	11.5 kts
Max:	13 kts



www.GuiceOffshore.com

Sales 985-273-2769 / Operations 337-889-0220

GO GUICE OFFSHORE

220 CLASS DP2 MULTI-PURPOSE VESSEL M/V GO COSMOS

APPROXIMATE TANK CAPACITIES

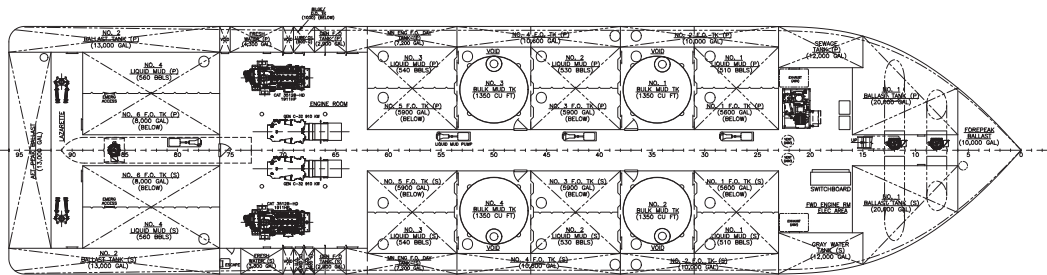
FUEL OIL	112,200 USG
FRESH WATER (FRESH)	1,500 USG
BALLAST	40,000 USG
NO. 1 OIL	400 USG
LUBE OIL/WASTE OIL	1,300 USG
BREATHING AIR	12,000 USG
DRY DOWNS (REAR/FRONT)	1,000 USG
BULK OIL	1,000 USG
BULK LUB	1,000 USG
GRAY WATER	12,000 USG

PRINCIPAL PARTICULARS

L.A.P.	201'-3 1/8"
L.B.P.	112'-2"
BEAM	46'-0"
DEPTH	18'-0"
REG. CAPACITY	400 TONS
TOWING UNDERWAY	5,000 TONS
TOWING UNDER 100 SPEED	1,000 TONS
ISO CLASS	SHIP OFFSHORE
REG. CLASS	CLASSIFIED
REG. CLASS	CLASSIFIED
REG. CLASS	CLASSIFIED



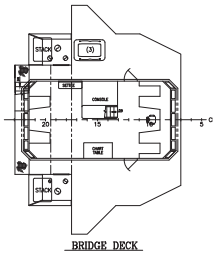
OUTBOARD PROFILE



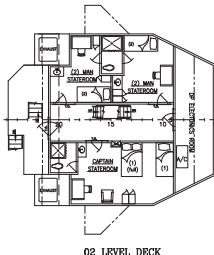
HOLD PLAN

NO.	REVISION	DESCRIPTION	DATE	BY
2	REVISED BULK HOLD TANK CAPACITY		6-2-11	APD
1	VESSEL PREVIOUSLY APPROVED BY USCG AND HAS BEEN 425 HELIX 416 HELIX 421-1421 HELIX 422 HELIX 423 HELIX 424 HELIX 425 HELIX 426 HELIX 427 HELIX 428 HELIX 429 HELIX 430 HELIX 431 HELIX 432 HELIX 433 HELIX 434 HELIX 435 HELIX 436 HELIX 437 HELIX 438 HELIX 439 HELIX 440 HELIX 441 HELIX 442 HELIX 443 HELIX 444 HELIX 445 HELIX 446 HELIX 447 HELIX 448 HELIX 449 HELIX 450 HELIX 451 HELIX 452 HELIX 453 HELIX 454 HELIX 455 HELIX 456 HELIX 457 HELIX 458 HELIX 459 HELIX 460 HELIX 461 HELIX 462 HELIX 463 HELIX 464 HELIX 465 HELIX 466 HELIX 467 HELIX 468 HELIX 469 HELIX 470 HELIX 471 HELIX 472 HELIX 473 HELIX 474 HELIX 475 HELIX 476 HELIX 477 HELIX 478 HELIX 479 HELIX 480 HELIX 481 HELIX 482 HELIX 483 HELIX 484 HELIX 485 HELIX 486 HELIX 487 HELIX 488 HELIX 489 HELIX 490 HELIX 491 HELIX 492 HELIX 493 HELIX 494 HELIX 495 HELIX 496 HELIX 497 HELIX 498 HELIX 499 HELIX 500	3-21-11	CB	
<p>REVISIONS</p> <p>MASTER BOAT BUILDERS, INC. P.O. Box 702 Bayou LaBatre, AL 36509</p> <p>200'-0" x 46'-0" x 16'-0" MULTI-SERVICE OSV</p> <p>Drawn by: C. BRULIN Checked by: M. TERRY Date: 3-21-11</p>				

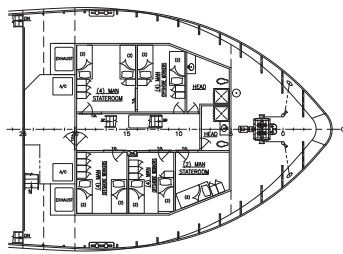
OUTBOARD PROFILE/HOLD PLAN



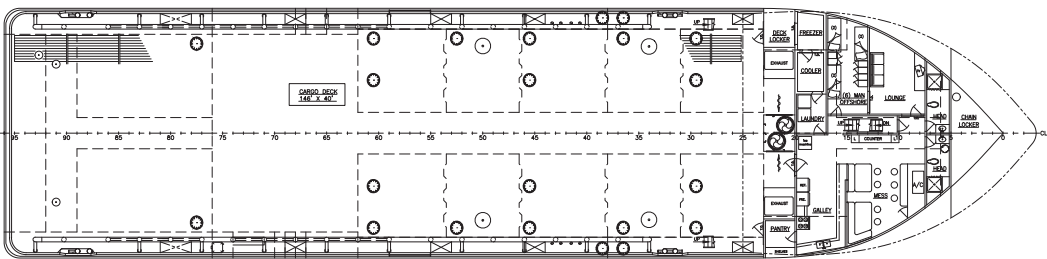
BRIDGE DECK



02 LEVEL DECK



FOCSLE DECK



MAIN DECK

NO.	REVISION	DESCRIPTION	DATE	BY
3	REVISED LOCATION & LENGTH OF STAR CROUT ON 02 LEVEL & BRIDGE DECK		8-10-11	CB
2	REVISED LOCATION OF AFT MINKY MANHOLE & ADDED CABLE ACCESS TRUNKS		8-2-11	APD
1	VESSEL PREVIOUSLY APPROVED BY USCG AND HAS BEEN 425 HELIX 416 HELIX 421-1421 HELIX 422 HELIX 423 HELIX 424 HELIX 425 HELIX 426 HELIX 427 HELIX 428 HELIX 429 HELIX 430 HELIX 431 HELIX 432 HELIX 433 HELIX 434 HELIX 435 HELIX 436 HELIX 437 HELIX 438 HELIX 439 HELIX 440 HELIX 441 HELIX 442 HELIX 443 HELIX 444 HELIX 445 HELIX 446 HELIX 447 HELIX 448 HELIX 449 HELIX 450 HELIX 451 HELIX 452 HELIX 453 HELIX 454 HELIX 455 HELIX 456 HELIX 457 HELIX 458 HELIX 459 HELIX 460 HELIX 461 HELIX 462 HELIX 463 HELIX 464 HELIX 465 HELIX 466 HELIX 467 HELIX 468 HELIX 469 HELIX 470 HELIX 471 HELIX 472 HELIX 473 HELIX 474 HELIX 475 HELIX 476 HELIX 477 HELIX 478 HELIX 479 HELIX 480 HELIX 481 HELIX 482 HELIX 483 HELIX 484 HELIX 485 HELIX 486 HELIX 487 HELIX 488 HELIX 489 HELIX 490 HELIX 491 HELIX 492 HELIX 493 HELIX 494 HELIX 495 HELIX 496 HELIX 497 HELIX 498 HELIX 499 HELIX 500	3-21-11	CB	
<p>REVISIONS</p> <p>MASTER BOAT BUILDERS, INC. P.O. Box 702 Bayou LaBatre, AL 36509</p> <p>200'-0" x 46'-0" x 16'-0" MULTI-SERVICE OSV</p> <p>Drawn by: C. BRULIN Checked by: M. TERRY Date: 3-21-11</p>				

GENERAL ARRANGEMENT