



# GUICE OFFSHORE

## 150 CLASS DP-1 SUPPLY VESSEL M/V GO PATRIOT



### HULL SPECIFICATIONS

Length:	150'
Beam:	36'
Depth:	12"
Draft Max:	10'
Clear Deck:	90' x 30'

### CAPACITIES

Deck Cargo:	335 LT
Potable Water:	8,900 usg
Fuel:	32,000 usg / 84,500* usg
Ballast Water:	53,600 usg
Liquid Mud:	1,250 bbls
Methanol:	36,000 usg

\* Fuel capacity when utilizing Liquid Mud tanks

### PROPULSION

Main Engines:	2 x Cat 3508
Total HP:	1,700 HP
Reduction Gears:	Twin Disc
Generators:	2 x 120Kw, 480vt
Bow Thruster:	Diesel Driven, 300 HP Cat

### SPECIAL EQUIPMENT

Fire Monitor:	Yes
---------------	-----

### ACCOMMODATIONS

Certified to Carry:	20
Cabins / Berths:	6 / 20
Walk in Cooler:	Yes
Walk in Freezer:	Yes
Ice Machine:	Yes

### ELECTRONICS

Radars:	Yes x 2
Auto Pilot:	Beier Integrated Systems
GPS (Navigation):	Yes
Echo Sounder:	Yes x 1
VHF Radios:	Yes x 3
Dynamic Positioning:	Beier Integrated Systems
DP Reference System:	DGPS
Electronic Plotter:	Yes
Sat Communication:	Vsat /Direct TV

### DOCUMENTATION

US Flag:	USCG, ON 1150827
Class:	ABS Loadline, USCG Sub "L" & "I"
Builder:	Master Boats
Delivery Date:	2004

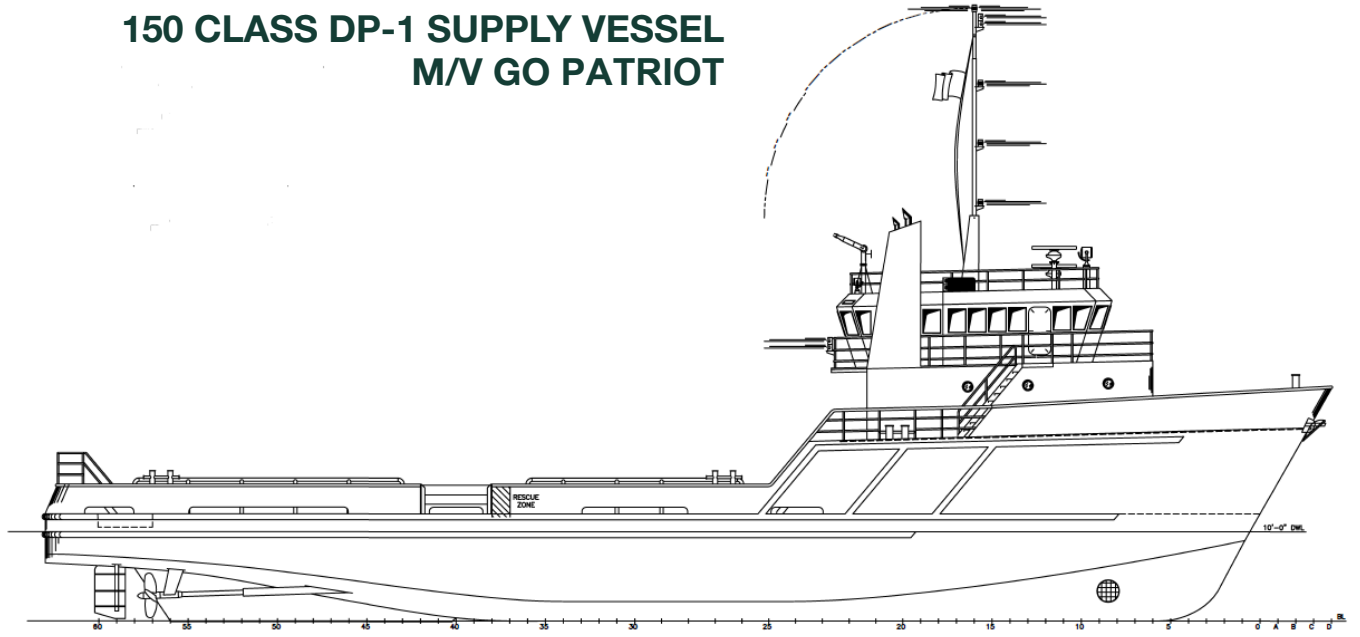


[www.GuiceOffshore.com](http://www.GuiceOffshore.com)

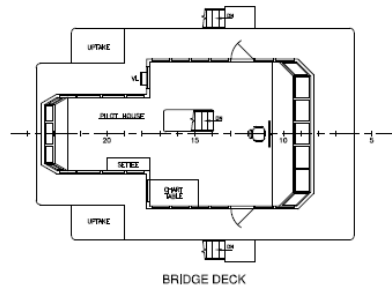
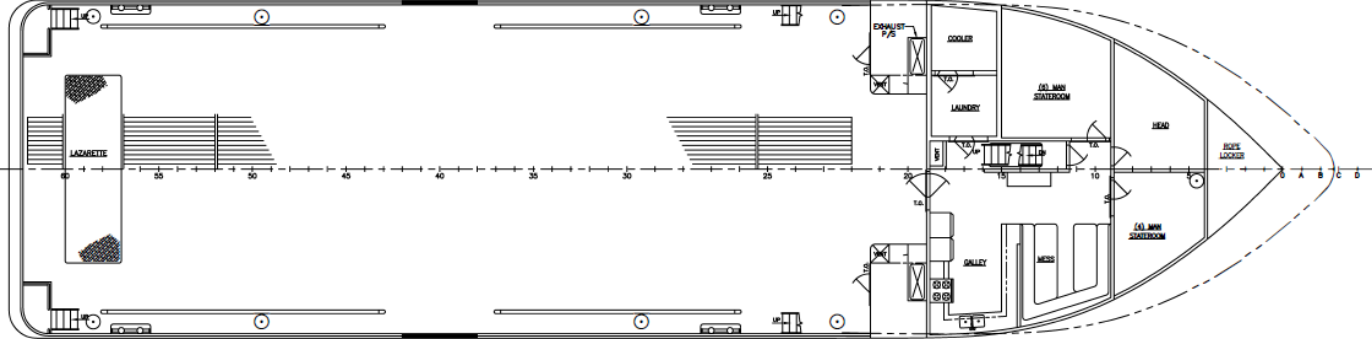
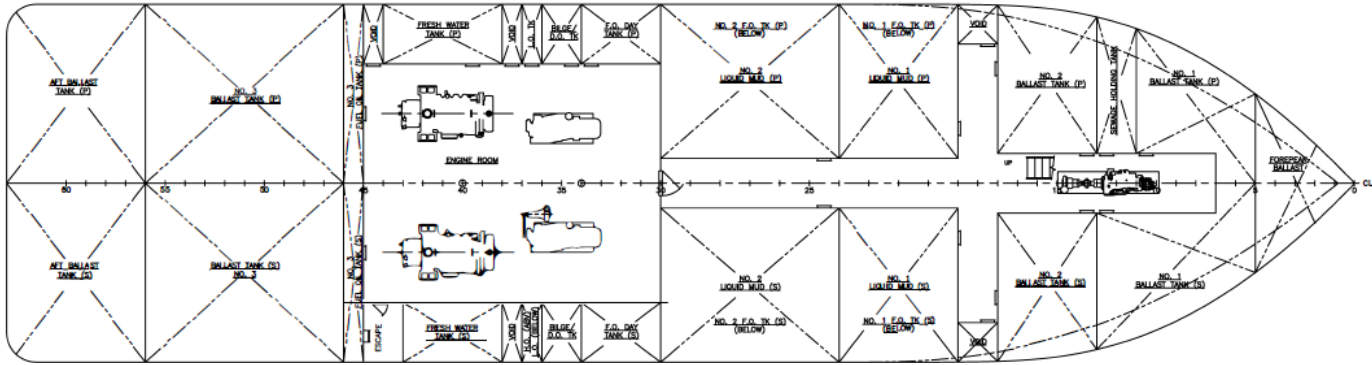
Sales 985-273-2769 / Operations 337-889-0220

# GO GUICE OFFSHORE

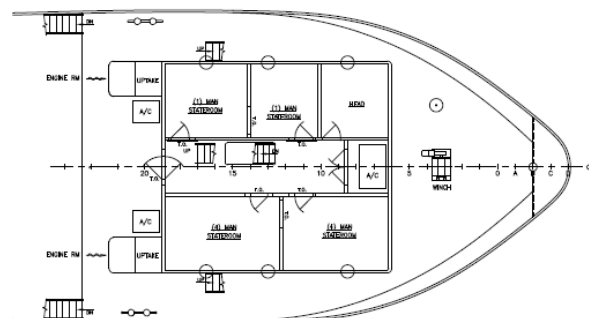
## 150 CLASS DP-1 SUPPLY VESSEL M/V GO PATRIOT



OUTBOARD PROFILE



BRIDGE DECK



FOCSLE DECK