

GO GUICE OFFSHORE

M/V GO AMERICA
150' Class DP1 Multipurpose Support and Subsea Vessel



GO GUICE OFFSHORE

www.GuiceOffshore.com

Sales 985-273-2769 / Operations 337-889-0220

M/V GO AMERICA

150' Class DP1 Multipurpose Support and Subsea Vessel

HULL SPECIFICATIONS

Length:	150'
Beam:	36'
Depth:	11' 6"
Draft Max:	10'
Clear Deck:	90' x 30'

CAPACITIES

Deck Cargo:	330 LT
Potable Water:	14,982 usg
Fuel:	31,497 usg / 77,163 usg* / 97,735 usg**
Ballast Water:	75,928 usg
Liquid Mud:	1,087 bbls
Methanol:	41,572 usg

* Fuel capacity when utilizing Liquid Mud tanks

** Fuel capacity when utilizing Liquid Mud and Methanol tanks

PROPULSION

Main Engines (New 2014):	2 x Cummins KTA 38MO
Total HP:	1,700 HP
Reduction Gears:	Twin Disc
Generators:	2 x 99kW Cummins
Bow Thruster:	360 HP, Diesel Driven

ACCOMMODATIONS

Certified to Carry:	20
Cabins / Berths:	6 / 18 + Passenger Lounge
Walk in Cooler:	Yes
Commercial Ice Maker:	Yes

ELECTRONICS

Radars:	Yes x 2
Auto Pilot:	Beier Integrated Systems
GPS (Navigation):	Yes
Echo Sounder:	Yes x 1
VHF Radios:	Yes x 3
Dynamic Positioning:	Beier Integrated Systems
DP Reference System:	GPS
Electronic Plotter:	Yes
Sat Communication:	Vsat, Speeds up to 1024kbps x 1024kbps available
Sat Television:	DirectTV

DOCUMENTATION

US Flag:	USCG, ON 1120138
Class:	ABS Loadline, USCG Sub "L" & "I"
Builder:	Bollinger Shipyards
Delivery Date:	2001

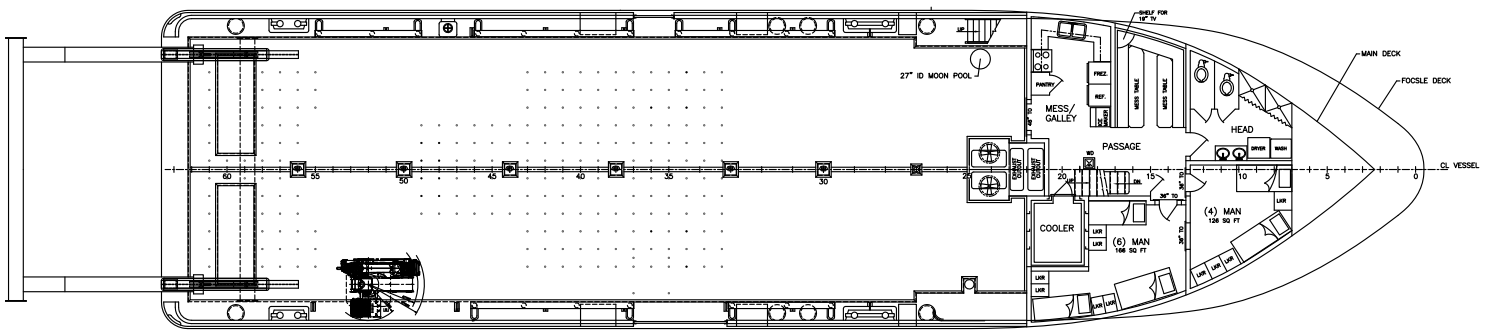
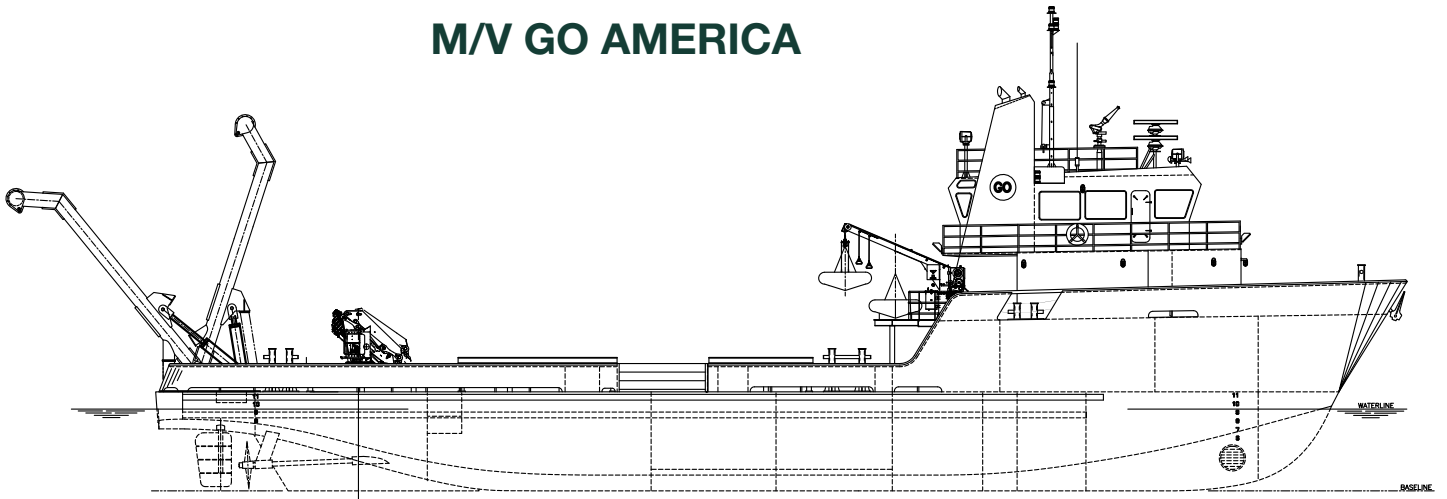
SPECIAL EQUIPMENT

Fire Monitor:	Yes
Deck Cargo Sockets:	240 in a NATO Grid Pattern, 2' x 2'
Crane:	Palfinger PK-32002-M Knuckleboom (see lifting capacity diagram)
A-Frame:	Transom Mounted, 11t with option of 15t with 2-Part Rigging,
Winch:	Man-rated Braden CH2804 Winch
HPU for Deck Gear:	Twin (redundant) 50-Hp Hydraulic Power Unit configured w/cross-over manifold to allow either HPU to serve Crane, A-Frame or both
Moonpool:	27" Inside Diameter (Transponder pole, submersible tracking and comms available upon request)
Steering Gear:	Dual Independent, Dual Ram Rudders Integrated with DP controls and Redundant HPU
Removable Bulwarks	10' Starboard side, 3' Port side
FRC w/ Davit:	USCG / SOLAS 4m Rescue Boat with 40 hp outboard

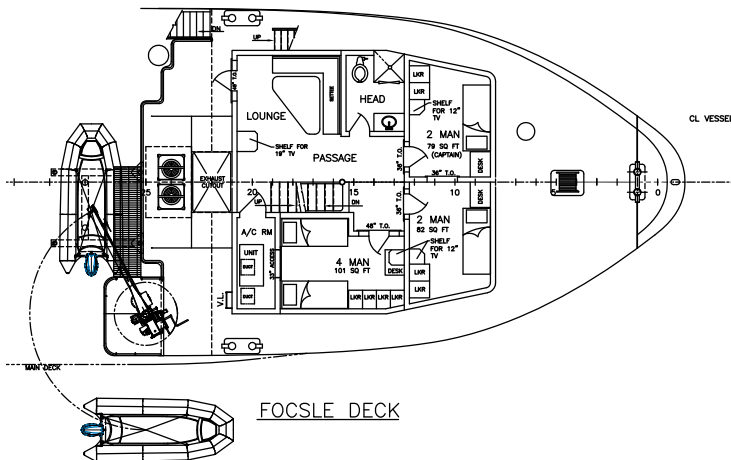
OPTIONAL EQUIPMENT AND SERVICES

Triton 1000/2	(2) ABS class, LED lighting, USBL Tracking/Navigation, manipulator arm, digital photography/video system, 305m max depth
Triton 3300/3	(2) ABS class, LED lighting, USBL Tracking/Navigation, manipulator arm, digital photography/video system, 1000m max depth
DECO chambers	54-inch and 60-inch DDC
Portable Dive Locker	20' Conex, with HalcyonDive Systems gear for (6) Exploration Divers
Portable Deck Generator	97Kw diesel, 460v, 60Hz, 3-phase w/Hubbell 4100R7W cable connector
Mixed gas dive system	NITROX/TRIMIX Maker, BAUER HP Compressors, Boost Pumps and Twin-tank/Rebreather support equipment
Diver propulsion vehicles	(8) long-range tow-behind Halcyon Dive Vehicles (SUEx); 3 & 5 mile range at 500Fsw operating depth. Speed: 200-375 Ft Per Min
Camera Equipment	Underwater Video, Still, Laser Scale, Benthic and Stereo Camera Systems

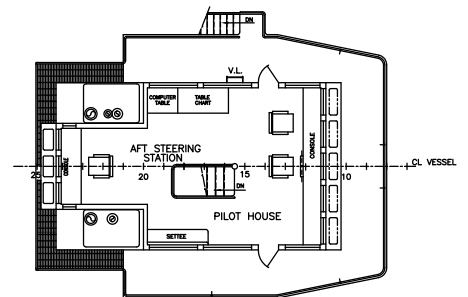
M/V GO AMERICA



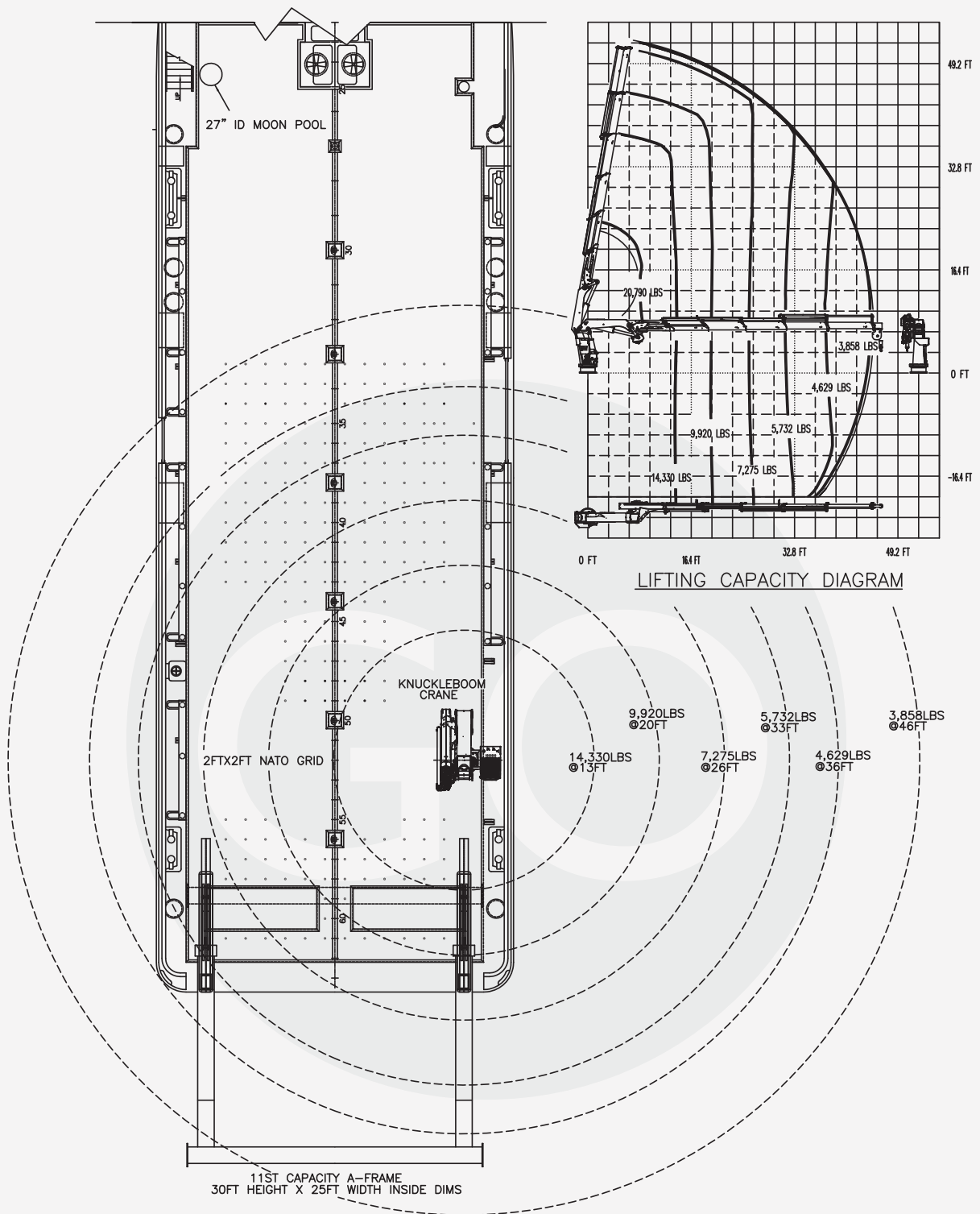
MAIN DECK ARRANGEMENT



FOCSLE DECK



PILOTHOUSE ARRANGEMENT



MAIN DECK ARRANGEMENT



www.GuiceOffshore.com

Sales 985-273-2769 / Operations 337-889-0220